

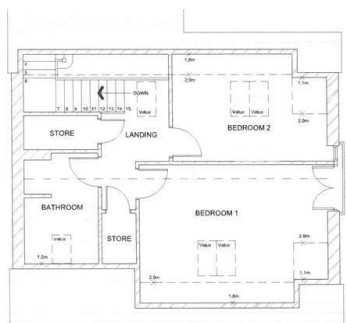


## Buiding Plot to rear of 1 Glynderwen Crescent, Sketty, Swansea, SA2 8EH

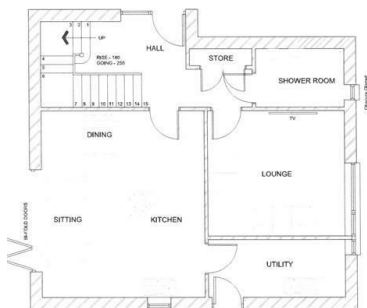
£175,000

- Self-build plot
- Planning consent granted by Swansea City Council
- Close to promenade and playing fields
- Full planning consent
- Planning for detached dwelling with flexible accommodation
- Close to Singleton Hospital
- Sought-after location
- Application number: 2024/2007
- Set between village of Mumbles and City Centre



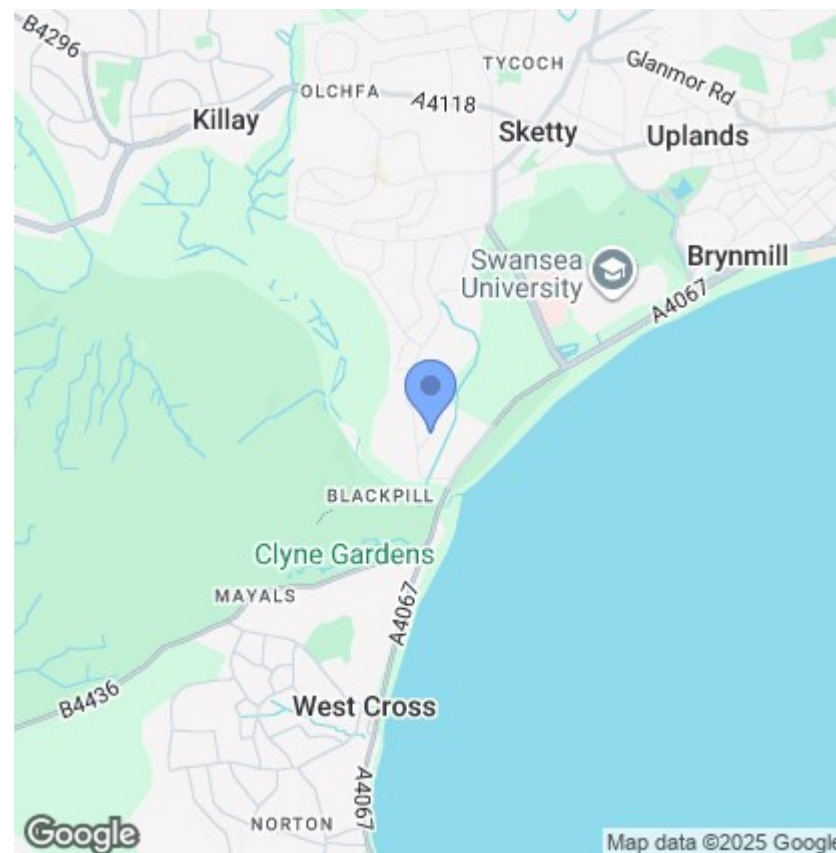


PROPOSED FIRST FLOOR PLAN 1:50  
GROSS INTERNAL FLOOR AREA - 1092



PROPOSED GROUND FLOOR PLAN 1:50  
GROSS INTERNAL FLOOR AREA - 6892

TOTAL GROSS INTERNAL FLOOR AREA - 12782



## Description

A Rare Opportunity – Prime Self-Build Plot in Sought-After Lower Sketty

An exceptional chance to acquire a self-build plot in the ever-popular residential area of Lower Sketty. The plot comes with full planning permission granted for the development of a detached home offering two to three bedrooms, open plan kitchen/ diner / lounge, utility and two bathrooms, ideal for those looking to create a bespoke residence. Perfectly positioned within walking distance of Ashleigh Road playing fields and the scenic Swansea Bay promenade, the location also enjoys easy access to Singleton Hospital and the charming coastal village of Mumbles.

We are advised by the vendor that the plot size is 11.5m wide (37'8) by 23m Deep (75'5)

## Directions

Postcode for SATNAV: SA2 8EH

## Viewings

Viewings by arrangement only.

Call 01792 653100 to make an appointment.